

JAXON MINING INC.

PRESS RELEASE

Suite 502-595 Howe Street

Vancouver, BC V6C 2T5

Tel: (604) 608-0400 Fax: (604) 602-9330

Toll Free: (877) 608-0007 Website: <http://www.jaxonmining.com>

July 26, 2018

#JAX 07-26

JAX-TSX.V

Page 1 of 4

Jaxon Confirms Copper Gold Porphyry Discovery at Red Springs; Assays Pending

The first phase of exploration at Jaxon's Red Spring discovery, 40km north of Smithers, BC, commenced on June 1, 2018. The Red Spring target resulted from the significant discovery made last summer of high-grade gold and tellurium-bearing hydrothermal tourmaline breccias detailed in Jaxon's press releases of September 14, 2017 and February 20 and May 16, 2018. The project lies within the greater Hazelton project area, which covers more than 39,000ha and includes Jaxon's Max volcanogenic massive sulphide project.

- More than 150 individual occurrences of mineralisation located of various styles attest to a significant porphyry system within the project area.
- Three new porphyry copper prospects identified in addition to tourmaline breccia mineralisation discovered in 2017
- Geological mapping and surface sampling nearing completion on 36km² area of interest.

This first phase of fieldwork included geological mapping and sampling over a 36km² area of interest, Red Spring, located within the Hazelton Property (fig.1). In addition to the rock sampling program, a total of 30 stream sediment samples have been taken to identify prospective areas on a semi-regional scale.

Jaxon is highly encouraged by the new discovery of five major mineralised trends within the Red Spring project area, four of which have been defined within six weeks of commencement of the field season. More significantly, the results validate the exploration team's initial interpretation that the gold-tourmaline-breccia discoveries are related to a large porphyry copper system with the definitive discovery of three zones of porphyry copper mineralisation to date.

Prospecting, mapping and sampling work has resulted in the recognition of approximately 150 mineral occurrences, 5 of which are considered significant discoveries justifying further evaluation. The mineralisation can be broadly categorised as:

- Hydrothermal Tourmaline Breccias
- Massive pyrite-arsenopyrite +/- sulphosalt +/- chalcopyrite veins
- Porphyry copper disseminated and fracture fill chalcopyrite mineralisation

The distribution of this mineralisation which broadly occupies a 5km x 2km corridor generally aligned around a NE-SW trending major structure and tending to concentrate around the Main and Red Spring Cirques. The extent, style and distribution of these mineral occurrences is consistent with an association with a large porphyry system that Jaxon had previously hypothesised and has subsequently demonstrated with the discovery of three currently separate areas of porphyry copper mineralisation.

Five new prospects of significance have been generated in the short six-week reconnaissance programme in addition to the tourmaline breccia mineralisation previously announced (2012-09-17, 2018-02-20). These are;

- Main and North Cirque Tourmaline Breccias
- Prime Ridge Porphyry Copper
- Razorback Porphyry Copper
- Red Spring Porphyry Copper and Sulphide Breccia
- Eastern Cirque Arsenic-Silver-Gold Prospect

The location of these prospects is shown on figure 1.

The Phase 1 surface sampling program will be completed by the end of July and all assays are expected to be received by mid-August. The company will report on the complete data set of rock and stream sediment results at that time.

IP and Ground Magnetic Survey

As previously reported, Simcoe GeoScience has been retained to use its experience in the Golden Triangle to complete a detailed ground magnetometer survey and time domain IP (induced polarization)/resistivity survey. This program is designed to evaluate the depth of tourmaline breccia bodies and outline their associated intrusive centres with developed porphyry systems.

The grid design has been extended and modified from the original survey plan to bias the coverage of the newly discovered 2018 mineralisation. Jaxon will utilize the expertise and interpretation products of Simcoe GeoScience in conjunction with its detailed mapping and sampling of the exposed sulphide occurrences in preparation for a fall drilling campaign.

Sample Preparation and Analyses:

Prospecting samples were collected in the field by experienced, professional prospectors and geological staff who selected hand samples from outcrop, chip samples, boulder and talus debris samples suitable for slabbing by rock saw. The samples were numbered, described and located in the field for follow-up. Numbered rock sample tags were placed inside each bag which was securely closed for transport to Jaxon's secure cold storage locked facility in Smithers, BC. Representative sample slabs were cut from large specimens and halved rock samples so that portions of select samples could be saved for the Jaxon's rock library, descriptive purposes and petrographic study. MS Analytical of Langley B.C. received the Rice Bag shipments after secure transport from Smithers and they prepared the samples by crushing, grinding and pulverizing to a pulp with barren material washing between each sample at the crush and pulverizing stages. Then 20 g of pulp was used for the (IMS-117 code) ultra trace level ICP/MS AR digestion method, and four acid 0.2 g ore grade ICP – AES method (ICP-240) and for the overlimit gold the FAS-415 method of 30 g fusion Gravimetric method was used to report gold ASSAYS. Overlimit silver is determined by Fire ASSAY 415 method. Laboratory standards and QA – QC is monitored by Jaxon.

Technical information in this news release has been reviewed and approved by Carl Swensson, F. AusIMM., a qualified person as defined in National Instrument 43 -101.

About Jaxon

Jaxon is a precious and base metals exploration company with a regional focus on Western Canada. The company is currently focused on advancing its Hazelton Project in north-central British Columbia and the More Creek Project (consolidating the Wishbone and Foremore properties) in BC's Golden Triangle.

ON BEHALF OF THE BOARD OF DIRECTORS
JAXON MINING INC.

"Jason Cubitt"

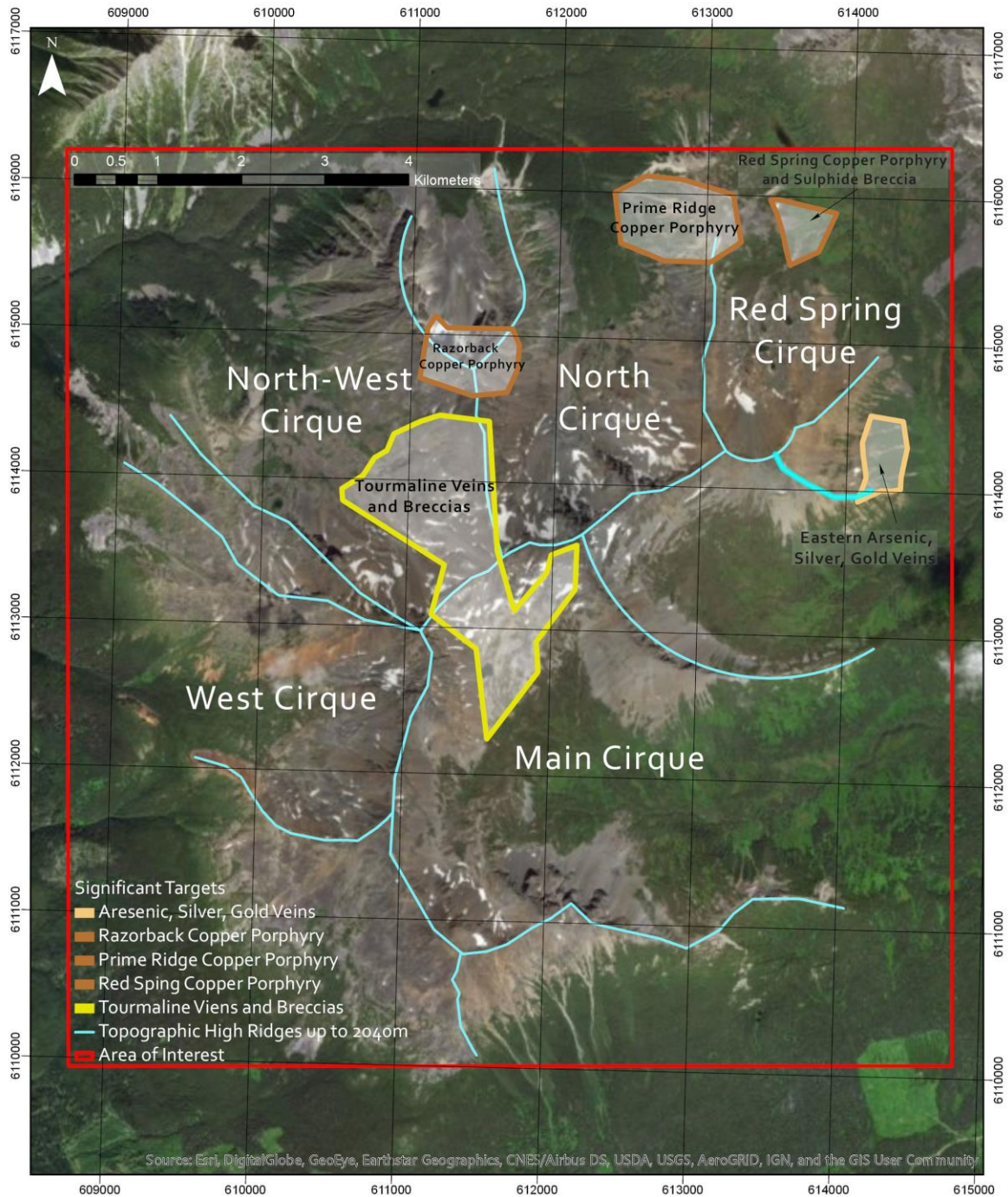
Jason Cubitt, President.

**For further information regarding Jaxon Mining Inc., please contact Jason Cubitt at 604-608-0400
Toll free: 1-877-608-0007.**

This news release may contain forward-looking information, which is not comprised of historical facts. Forward-looking information involves risks, uncertainties and other factors that could cause actual events, results, performance, prospects and opportunities to differ materially from those expressed or implied by such forward-looking information. Forward-looking information in this news release may include, but is not limited to, the Company's objectives, goals or future plans. Factors that could cause actual results to differ materially from such forward-looking information include, but are not limited to, those risks set out in the Company's public documents filed on SEDAR. Although the Company believes that the assumptions and factors used in preparing the forward-looking information in this news release are reasonable, undue reliance should not be placed on such information, which only applies as of the date of this news release, and no assurance can be given that such events will occur in the disclosed time frames, or at all. The Company disclaims any intention or obligation to update or revise any forward-looking information, whether as a result of new information, future events or otherwise, other than as required by law. Neither TSX Venture exchange nor its Regulations Services Provider (as that term is defined in the policies of the TSX Venture Exchange) accepts responsibility for the adequacy or accuracy of this release.

See Map Below

[Click Here to see our most recent photos from the field](#)



Coordinate System: NAD 1983 UTM Zone 9N
 Projection: Albers
 Datum: D North American 1983
 False Easting: 1000000.0
 Grid Line Intervals: 1000m

Produced by: Melanie Harris
 Company: Jaxon Mining Inc.
 Date: 2018-07-26

JAXON
 MINING

Figure 1: Red Spring Project Area Location and Significant Target, July 2018