

# JAXON MINING INC.

## PRESS RELEASE

Suite 502-595 Howe Street  
Vancouver, BC V6C 2T5  
Tel: (604) 608-0400 Fax: (604) 602-9330  
Toll Free: (877) 608-0007 Website: <http://www.jaxonmining.com>

February 20, 2018  
#JAX 03-18  
JAX-TSX.V

Page 1 of 6

---

## Up to 33 g/t Au in newly discovered gold-copper porphyry system at Hazelton

Jaxon Mining Inc. (TSXV: JAX, FSE: OU31, OTC: JXMNF) is pleased to announce high grade gold and tellurium assays from a second phase of expanded sampling at its Cirque-Ridge-Tarn (CRT) target within its extensive Hazelton Project in Central British Columbia. The CRT target is located approximately 17km SW from Jaxon's MAX silver-zinc target.

Highlights include:

- Highly gold-enriched breccia complexes returned assay values up to 33 g/t Au.
- Single breccia outcrops occur over widths up to 5 metres and intermittent strike length up to 3 kilometres.
- Discovery area of multiple high-grade gold breccia zone complexes expanded to at least 1.5 kilometres by 3 kilometres.
- Further evidence that the CRT and RS (Red Spring) targets are genetically related to a large intrusive/porphyry system.

Jason Cubitt, Jaxon's president and CEO commented: "This is showing all the signs of a large precious and base metals-rich porphyry system and may be a primary engine driving mineralization in the entire district. I congratulate our technical teams for the excellent work they've done identifying it." Mr. Cubitt continued: "Based on this discovery, Jaxon now has two primary discoveries within the Hazelton district, the now-confirmed Max VMS system and the CRT/RS system hosting high grade precious and base metal mineralization."

The initial discovery of extensive breccia bodies which returned high grade gold and tellurium assays from the Cirque-Ridge-Tarn (CRT) was reported in Jaxon's press release of September 14, 2017.

During the fall exploration season Jaxon expanded the surface prospecting coverage of the brown and bright red gossanous areas of the CRT and RS prospects with a further 49 rock samples collected from the CRT. This work not only returned high grade gold assays but also expanded the extent of the tourmaline breccia occurrences to three separate cirques approximately 500m apart.

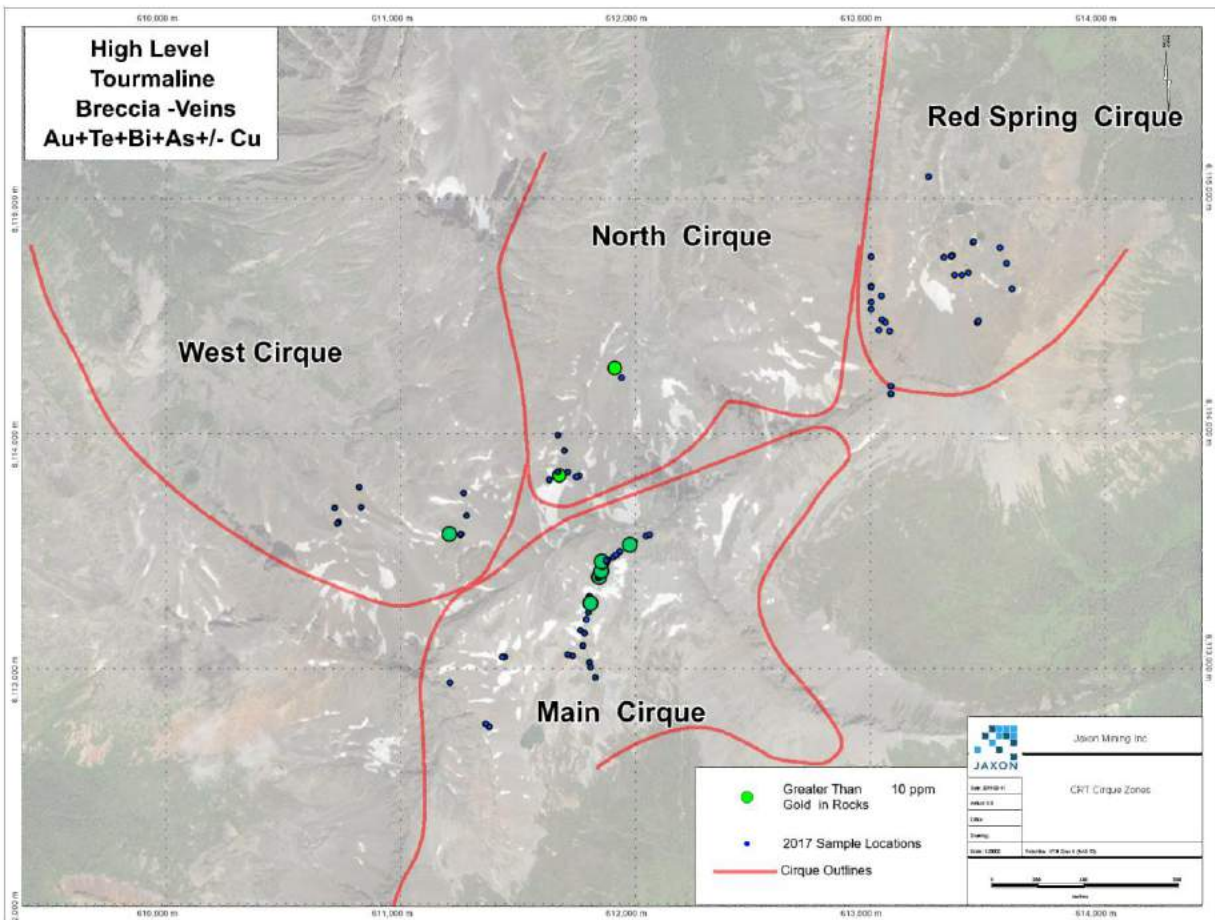


Figure 1. Plan view of Jaxon sample locations

Sample grades from these three cirques now include 33.8 g/t, 18.4 g/t and 18.3 g/t gold with tellurium concentrations exceeding 73 g/t. Table 1 summarizes the most significant rock sample results to date.

**Table 1: Significant Assays from the CRT Prospect**

<b>CRT Prospect - North Cirque</b>						
	FAS-415	IMS-117	IMS-117	ICP-240	IMS-117	ICP-240
	<b>Au g/t</b>	<b>Te g/t</b>	<b>Cu ppm</b>	<b>Bi %</b>	<b>Sb ppm</b>	<b>S %</b>
A0004552	33.80	73.18	38.6	0.393	10.30	0.32
A0003810	11.93	49.46	118.7	0.045	0.99	4.92
<b>CRT Prospect - West Cirque</b>						
A0003779	18.30	10.23	3549.3	0.917	0.16	3.26
<b>CRT Prospect - Main Cirque (from highest to lowest elevation along ridge)</b>						
A0003691	3.18	8.60	886.6	0.020	31.60	3.42
A0003777	5.99	17.70	8742.1	0.050	97.85	4.48
A0003778	10.81	7.02	660.4	0.140	420.33	0.40
A0003787	17.57	34.51	596.8	0.661	2418.00	6.42
A0003773	5.24	8.96	357.8	0.033	51.14	1.50
A0003774	1.77	2.32	202.2	0.014	53.08	0.67
A0003775	3.61	8.31	516.5	0.034	54.07	1.69
A0003772	11.38	19.79	980.4	0.108	164.95	4.73
A0003685	9.80	16.85	2561.9	0.143	227.10	3.19
A0003686	4.17	7.75	776.3	0.062	128.93	2.41
A0003770	18.43	25.02	1320.3	0.240	305.72	0.65
A0003682	4.23	7.50	15.1	0.435	118.87	1.61
A0003684	3.48	8.27	7.1	0.204	51.96	1.95
A0003680	17.55	30.06	20.9	0.491	181.25	4.70
A0003679	2.52	7.45	51.2	0.377	148.80	0.81

The tourmaline breccia bodies are manifest as both near vertical planar structures and as apparent stratabound bodies. The high sulphide content results strong oxidation, making the mineralization very visible as brown, rusty outcrops. The tourmaline breccias are characterized by the chemical association of gold-tellurium-bismuth-arsenic-antimony-boron which Jaxon interprets as being indicative of an intrusive origin for the mineralization.

While exploration at CRT and RS is at an early reconnaissance stage, Jaxon is highly encouraged by the tenor, style, vertical extend and broad distribution of the breccia bodies. Most encouraging are significant widths of the breccia zones observed to date of up to 5m. The distribution of the breccia bodies proximal to the large RS alteration zone and the fact that tourmaline breccia is developed within the large disseminated pyrite zone at RS may suggest a genetic link and Jaxon is adopting an exploration model based on the concept that the breccia bodies are genetically related to porphyry processes associated with the RS alteration. This working concept remains to be proven yet the lines of evidence at present are compelling in that:

- Both the CRT and RS areas display strong evidence for explosive mineralized breccia body and vein complex formation in what is interpreted to be at high levels within an intrusive system.
- The main granodiorite intrusion (Blunt Mtn. Stock) and its thermal metamorphic aureole in the Bowser Group sediments does not appear not to be the origin of the best gossanous areas at CRT and RS. Small argillized granitic bodies and sulphide breccia exposures at the RS as well as the tourmaline-quartz -sulphide breccia bodies and veins at the RS and CRT are found to be well mineralized. Primary coarse iron pyrite and arsenopyrite are often preserved in veins and breccia at surface. Blind and buried hydrothermal-magmatic intrusive sources providing clasts for the tourmaline matrix breccia are a more likely source breccias seen at surface at the RS and CRT prospects.
- Veins and tourmaline-quartz bearing breccias of many descriptions have been found indicative of a long- lived system. Jaxon has not yet mapped pipe-like tourmaline rich breccia bodies. However, limited exposures and samples of talus debris material display sulphides in open spaces, sulphides in quartz-tourmaline matrix cement, sulphides in sheeted veinlets -veins in sericite altered host rock adjacent to tourmaline-rich zones or veinlets. Most carry elevated gold with tellurium when sulphides are present.
- There is a considerable variation in the breccia textures showing chaotic and milled or jumbled appearance, angular to subrounded fragments, so-called “ shock and shingle” textures of bounding host rocks. The textures are visually impressive, sometimes, with open spaces in jigsaw puzzle textures of acicular crystals, needles, or radial fibrous splays of black tourmaline. The textures are indicative of highly fluidised, high pressure hydrothermal processes typically associated with the intrusive-porphyry environment.
- Red Spring has several features not yet identified in the high level CRT hydrothermal setting possibly due to the differences in erosion and uplift levels of exposure of these systems. The RS has some small quartz bearing argillized granitic bodies, chaotic sulphide explosive breccias and magnetite alteration overprinting some of the Bowser sedimentary units as well as significant tourmaline veinlet-vein and breccia development. Although most of the primary disseminated pyrite is now gone at RS, it appears that a greater amount of sericite alteration is still present as compared to that seen at the CRT targets. Many of the surface exploration, first pass, prospecting rock samples collected in the RS area have residual anomalous copper contents.
- Three hydrogeochemical water samples were taken from the RS drainage and spring itself. High levels of K, Na, Ca, Mg, and Mn were present with up to 32,000 ppb Sulphur. Two samples contained copper measurements of 0.95ppb and 4.6 ppb Cu along with anomalous zinc levels up to 6.8 ppb. These data indicate that copper and intense alteration is in contact with the leaching water

regime and that the presence of primary copper sulphide mineralization at surface may not have survived. In British Columbia, this surface copper leaching in the alpine environment is also found at the active exploration and mine sites such as Red Chris, Galore Creek, Treaty Glacier and at Mitchell-Sulphurets-Kerr zone and Iron Cap. All of these important copper porphyry systems have had blind discovery of major portions of their mineralized system at depth.

Jaxon intends to undertake a major program of geological and alteration mapping over the CRT and RS prospects over the 2018 field season based on this exploration model. The program will include further geochemical sampling, geophysics and first pass drilling on the CRT breccias. The objective for the RS prospect is to define the character and extent of the large alteration system of the large alteration with the objective of defining drill targets for the 2019 season.

#### **Sample Preparation and Analyses:**

Prospecting samples were collected in the field by experienced, professional prospectors and geological staff who selected hand samples from outcrop, chip samples, boulder and talus debris samples suitable for slabbing by rock saw. The samples were numbered, described and located in the field for follow-up. Numbered rock sample tags were placed inside each bag which was securely closed for transport to Jaxon's' secure cold storage locked facility in Smithers, B.C. At the end of the diamond saw core cutting program for the Max drilling project in December, representative sample slabs were cut from large specimens and halved rock samples so that portions of most samples collected in the fall could be saved for the Jaxon's rock library, descriptive purposes and petrographic study. MS Analytical of Langley B.C. received the Rice Bag shipments after secure transport from Smithers and they prepared the samples by crushing, grinding and pulverizing to a pulp with barren material washing between each sample at the crush and pulverizing stages. Then 20 g of pulp was used for the (IMS-117 code) ultra trace level ICP/MS AR digestion method, and four acid 0.2 g ore grade ICP -AES method (ICP-240) and for the overlimit gold the FAS-415 method of 30 g fusion Gravimetric method was used to report gold ASSAY 33.8 ppm. Laboratory standards and QA -QC is monitored by Jaxon.

Technical information in this news release has been reviewed and approved by Derrick Strickland, P.Geo., a qualified person as defined in National Instrument 43 -101.

#### **About Jaxon**

Jaxon is a precious and base metals exploration company with a regional focus on Western Canada. The company is currently focused on advancing its Hazelton Project in north-central British Columbia and the More Creek Project (consolidating the Wishbone and Foremore properties) in BC's Golden Triangle.

ON BEHALF OF THE BOARD OF DIRECTORS  
JAXON MINING INC.

"Jason Cubitt"  
Jason Cubitt, President.

**For further information regarding Jaxon Mining Inc., please contact Mark Carruthers at 604-608-0400  
Toll free: 1-877-608-0007.**

This news release may contain forward-looking information, which is not comprised of historical facts. Forward-looking information involves risks, uncertainties and other factors that could cause actual events, results, performance, prospects and opportunities to differ materially from those expressed or implied by such forward-looking information. Forward-looking information in this news release may include, but is not limited to, the Company's objectives, goals or future plans. Factors that could cause actual results to differ materially from such forward-looking information include, but are not limited to, those risks set out in the Company's public documents filed on SEDAR. Although the Company believes that the assumptions and factors used in preparing the forward-looking information in this news release are reasonable, undue reliance should not be placed on such information, which only applies as of the date of this news release, and no assurance can be given that such events will occur in the disclosed time frames, or at all. The Company disclaims any intention or obligation to update or revise any forward-looking information, whether as a result of new information, future events or otherwise, other than as required by law. Neither TSX Venture exchange nor its Regulations Services Provider (as that term is defined in the policies of the TSX Venture Exchange) accepts responsibility for the adequacy or accuracy of this release