



Red Springs Project – A Large Porphyry System

Indicated by an extensive polymetallic tourmaline breccia zone with high-grade gold-cobalt and other antimony-silver sulfide zones.

TSXV: JAX

Location – 40 km north of Smithers, B.C.
Size – Up to 46,319 hectares (see Mineral Claims)
Ownership – Staked or Option to earn 100%

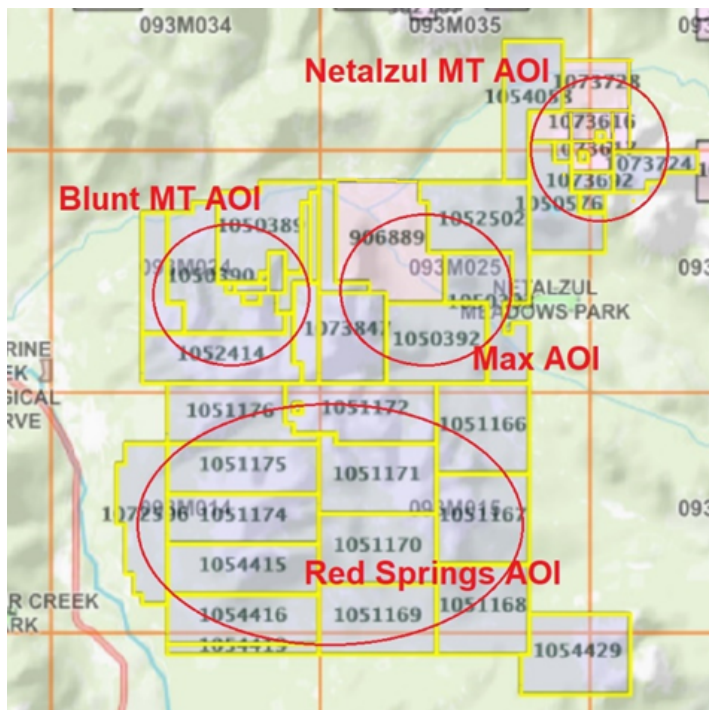


The Red Springs Project is a prospectively world class copper porphyry system including three porphyry targets, a distal extensive gold-copper-cobalt polymetallic tourmaline breccia zone/pipe and a high-grade antimony-silver sulfide zone. Significant work has been done at Red Springs since the system’s first discovery in 2017. In 2018, an anomalously large tourmaline breccia zone was discovered

Red Springs’ breccia is analogous to other known tourmaline breccia at world-class porphyry copper deposits such as the super large El Teniente porphyry copper deposits in Chile and the Soledad porphyry copper-gold deposit in Peru. The tourmaline breccia complex at Red Springs is oriented horizontally and appears more like a sill in a thrust fault zone, perhaps distal to the yet undetected pipe(s).

In 2019, three outcrops of Late Cretaceous potassic feldspar granodiorite porphyries with disseminated chalcopyrite and two high copper soil anomalies were discovered.

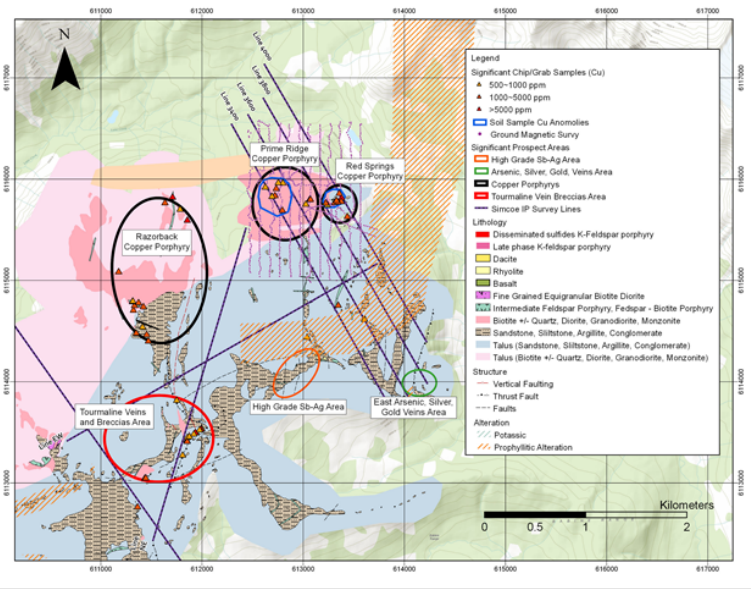
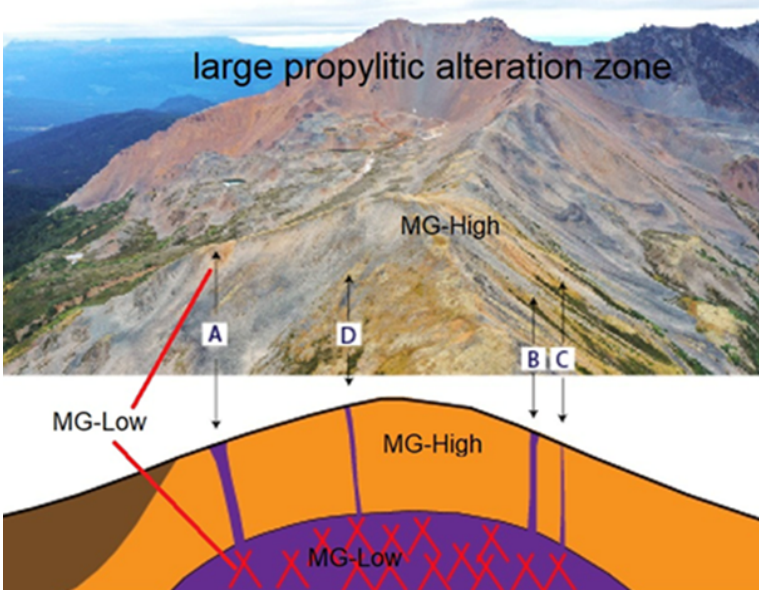
Gold grades from surface grab samples and channel samples from the tourmaline breccia zones are up to 43.49 g/t with cobalt and copper grades up to 0.37% and 8.33%, respectively. Gold grades from drilling core samples at the Backbone zone are up to 6.60 g/t with cobalt grades up to 0.10%.



Hazelton Property Areas of Interest



Red Springs and Primary Ridge Prospects



3D Conceptual model of the porphyry system at Red Springs

Geology map and six significant prospects delineated at Red Springs

Red Springs 2019 Work Program Highlights

Detailed geological mapping and sampling over Red Springs area

- +1000 rock samples, 212 channel samples
- 2 km² soil geochemistry sampling and studies
- 23 km (7 lines) ground IP survey and 2 km² ground magnetics survey
- Five diamond drill holes – total of 1050 m
- Six significant prospects delineated:
 - one high grade gold-bearing quartz tourmaline breccia mineralization zone with Co, Cu and Bi credits
 - three porphyry copper targets
 - two polymetallic massive sulphide and sulphosalt veins hosted (Sb-Ag-Au-Cu) mineralization
- Three additional projects (AOI) defined at the Hazelton Property



Left: Potassic Feldspar Granodiorite Porphyry and Above: Massive Sulfide Chalcopyrite and Arsenopyrite in the Tourmaline Breccia Zone

INVESTOR RELATIONS
 Kaye Wynn Consulting
 (604) 558-2630 / (888) 280-8128
 info@kayewynn.com
 Freeform Communications
 (604) 243-0499
 enquiries@freeformcom.com

MANAGEMENT & DIRECTORS
 John King Burns, Chairman & CEO
 Tony Guo, P.Geo., Director, President & Chief Geologist
 Alain Voisin, CPA, CGA, CFO
 James Lavigne, P.Geo., Director
 Laurence Stephenson, P.Geo., Director

SHARE STRUCTURE
 (as of January 6, 2020)
 Shares issued 125,776,684
 Options 9,650,000
 Warrants 22,892,500
 Fully diluted 158,319,184



TSXV: JAX