

*Jaxon Mining – Red Springs Project
A Major Discovery in the Skeena Arch*

*Gold-Cobalt Tourmaline Breccia
Mineralization Leads to
Large Scale Copper-Gold Porphyry Targets*

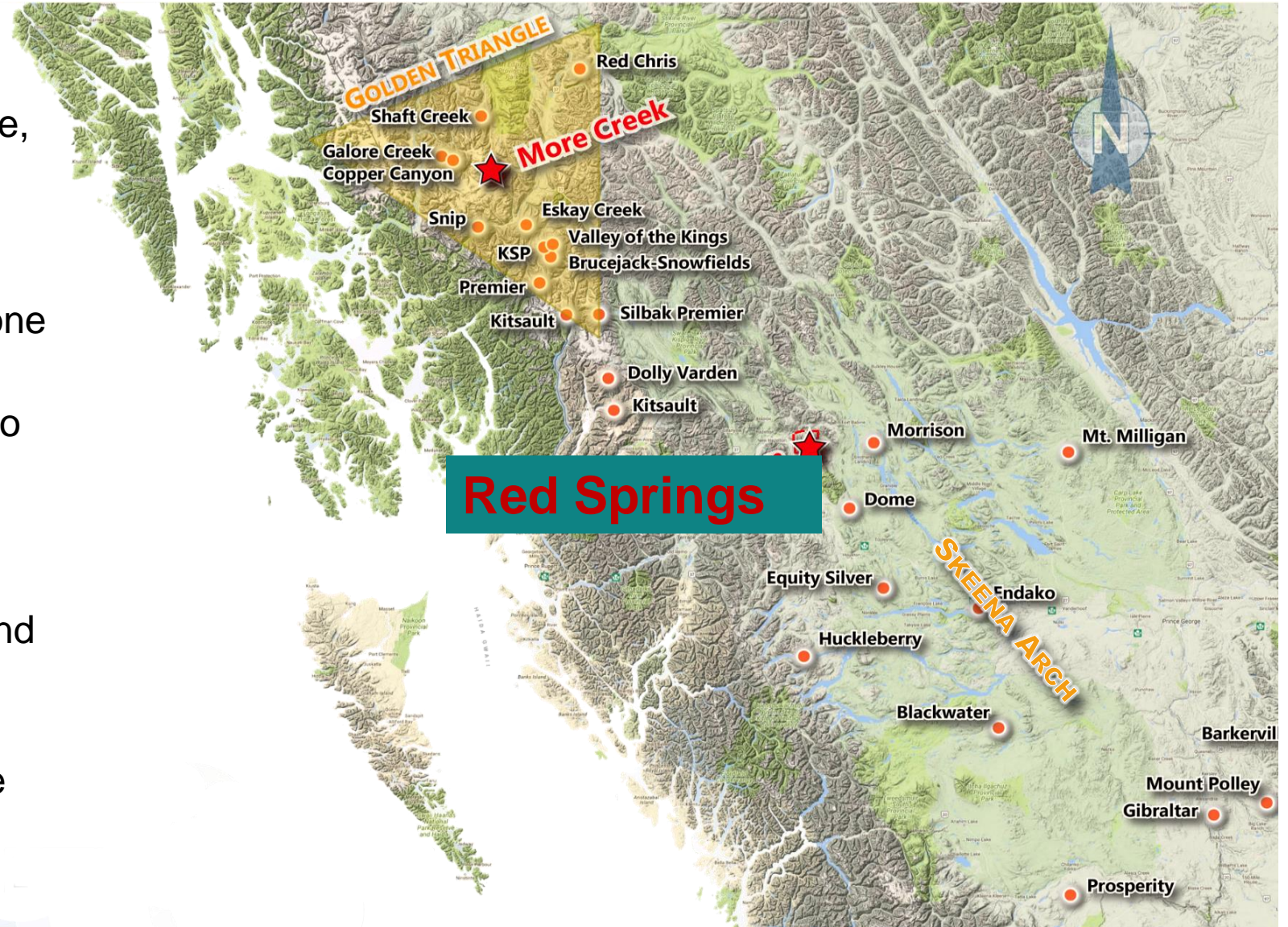
Cautionary Statement



Investors are cautioned that, except for statements of historical fact, certain information contained in this document includes “forward-looking information”, with respect to a performance expectation for Jaxon. Such forward-looking statements are based on current expectations, estimates and projections formulated using assumptions believed to be reasonable and involving a number of risks and uncertainties which could cause actual results to differ materially from those anticipated. Such factors include, without limitation, fluctuations in foreign exchange markets, the price of commodities in both the cash market and futures market, changes in legislation, taxation, controls and regulations of national and local governments and political and economic developments in Canada and other countries where Jaxon carries-out or may carry-out business in the future, the availability of future business opportunities and the ability to successfully integrate acquisitions or operational difficulties related to technical activities of mining and reclamation, the speculative nature of exploration and development of mineral deposits located, including risks in obtaining necessary licences and permits, reducing the quantity or grade of reserves, adverse changes in credit ratings, and the challenge of title. The Company does not undertake an obligation to update publicly or revise any forward-looking statements or information, whether as a result of new information, future events or otherwise, unless so required by applicable securities laws. Some of the results reported are historical and may not have been verified by the Company. All technical information in this presentation have been reviewed and approved by Yingting (Tony) Guo, P.Geo., a Qualified Person as defined by National Instrument 43-101

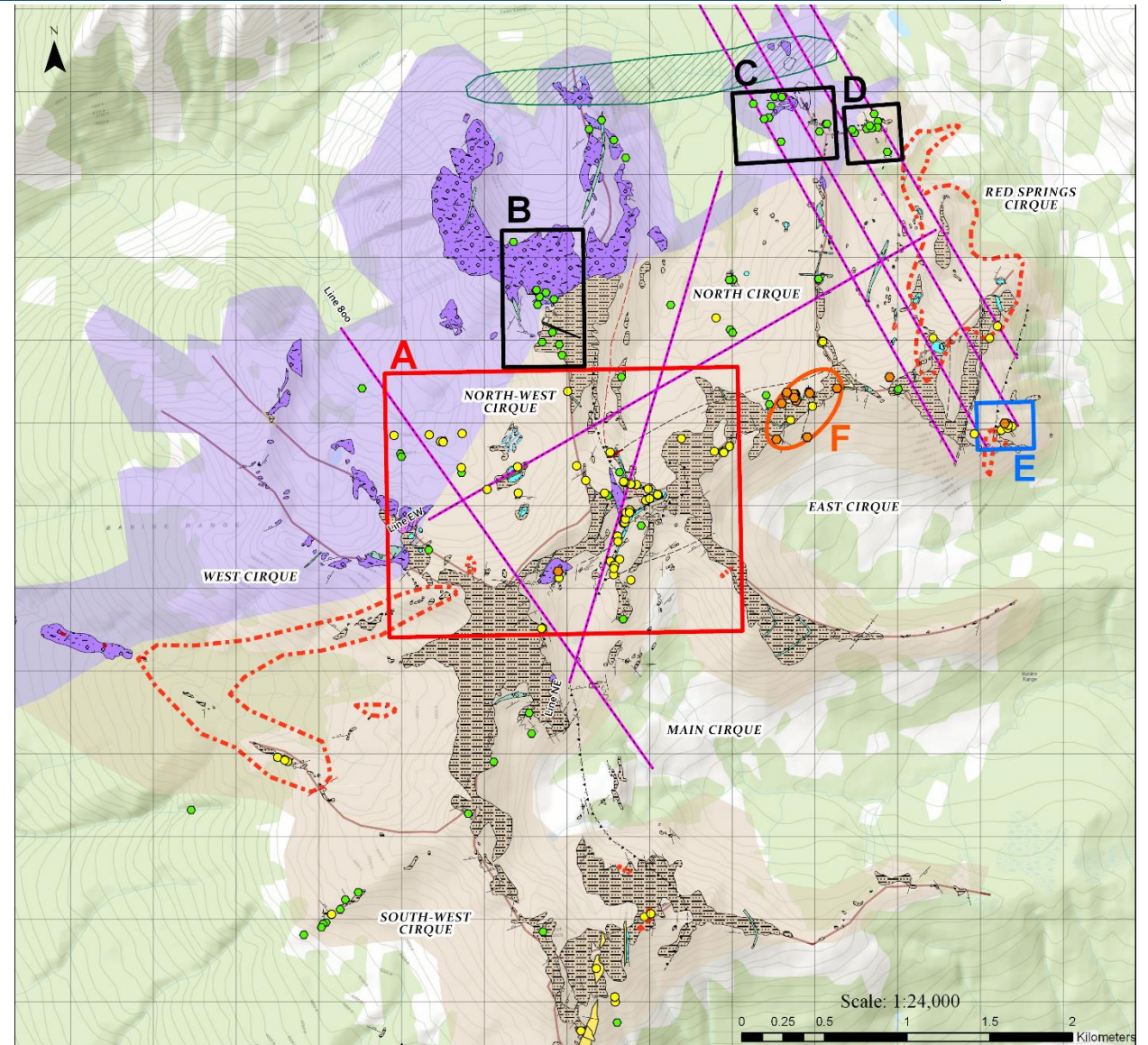
Red Springs Project Highlights

- 42,244 hectares
- 2017/2018 discovery – 1000 m strike, high grade gold-cobalt tourmaline breccia mineralization zone and porphyries
- All 5 holes confirm mineralization zone (up to 26 m thick)
- 3 of 5 confirm high grade band (up to 8.20 g/t Au Eq)
- 16 high priority IP and magnetic anomalies
- 2019 drilling targets defined by IP and surface rock sampling data and mapping:
 - >1 km² tourmaline breccia zone
 - 3 gold-copper porphyry targets



Red Springs Project Highlights

- Detailed geological mapping & sampling over Red Springs area
- +700 rock samples, 192 channel samples, 18 slabs, 19 stream sediments, 42 hydrogeological samples
- 23 km (7 lines) ground IP & magnetics survey
- 5 diamond drill holes – total of 1050 m
- 5 significant prospects delineated:
 - A: High grade gold-bearing quartz tourmaline breccia mineralization zones with Co, Cu & Bi credits
 - B, C & D: 3 porphyry gold-copper targets
 - E & F: 2 massive sulphide & sulphosalt veins hosted (Ag-Au-Cu) mineralization

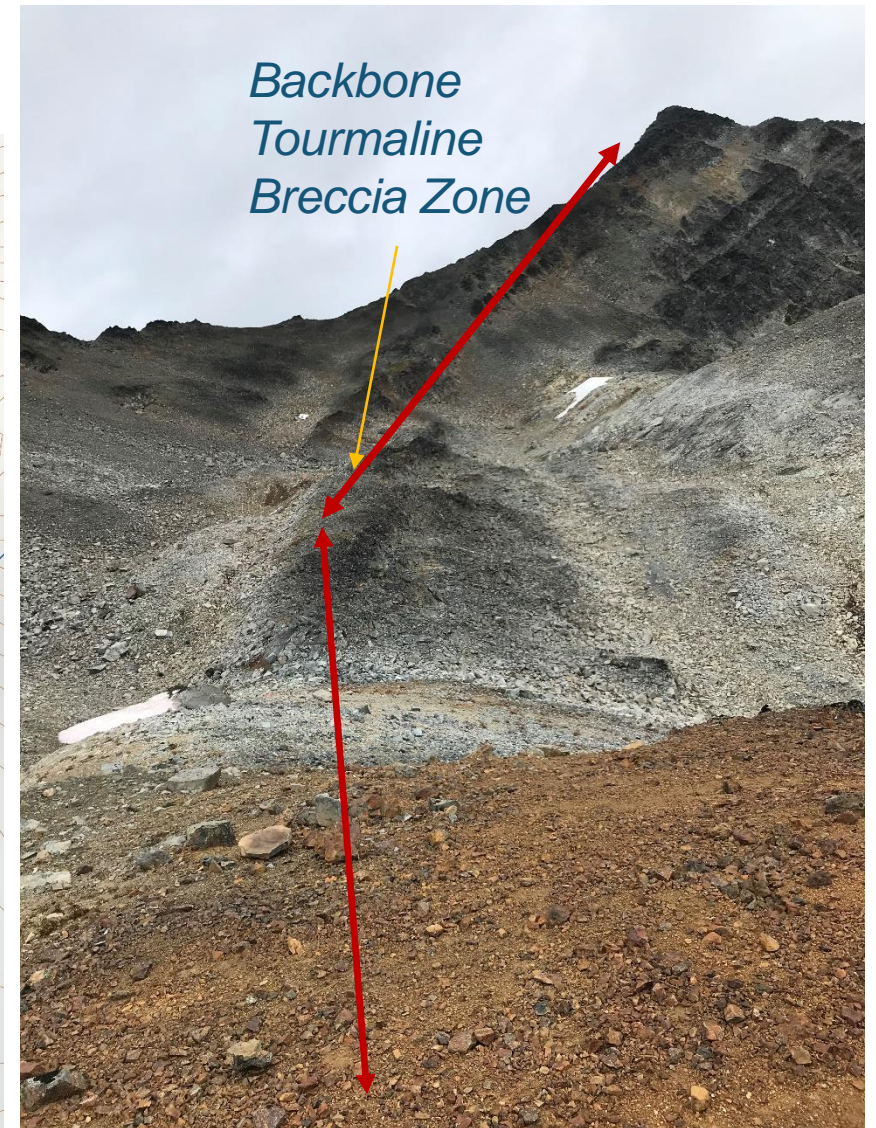
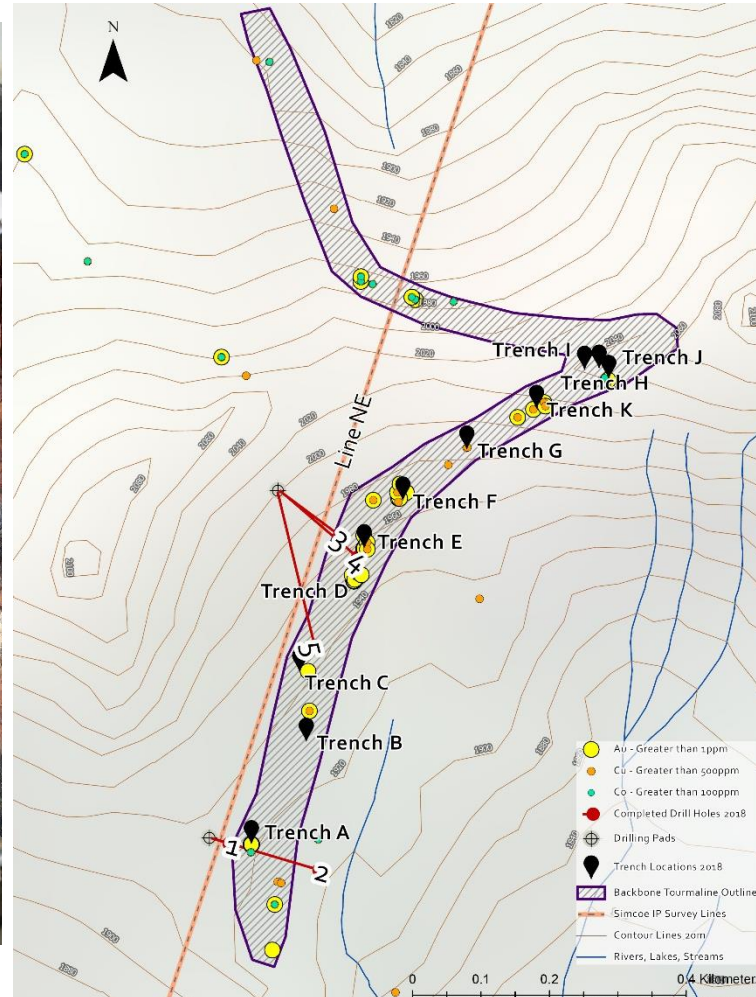


Backbone Gold-Bearing Tourmaline Breccia Zone

- 1000 m strike, gold-bearing tourmaline breccia zone at Backbone and North Cirque areas
- 5 m @ 6.78 g/t Au including 2 m @ 15.28 g/t in Channel E; 13 m @ 2.86 g/t Au including 2 m @ 8.96 g/t in Channel D at Backbone



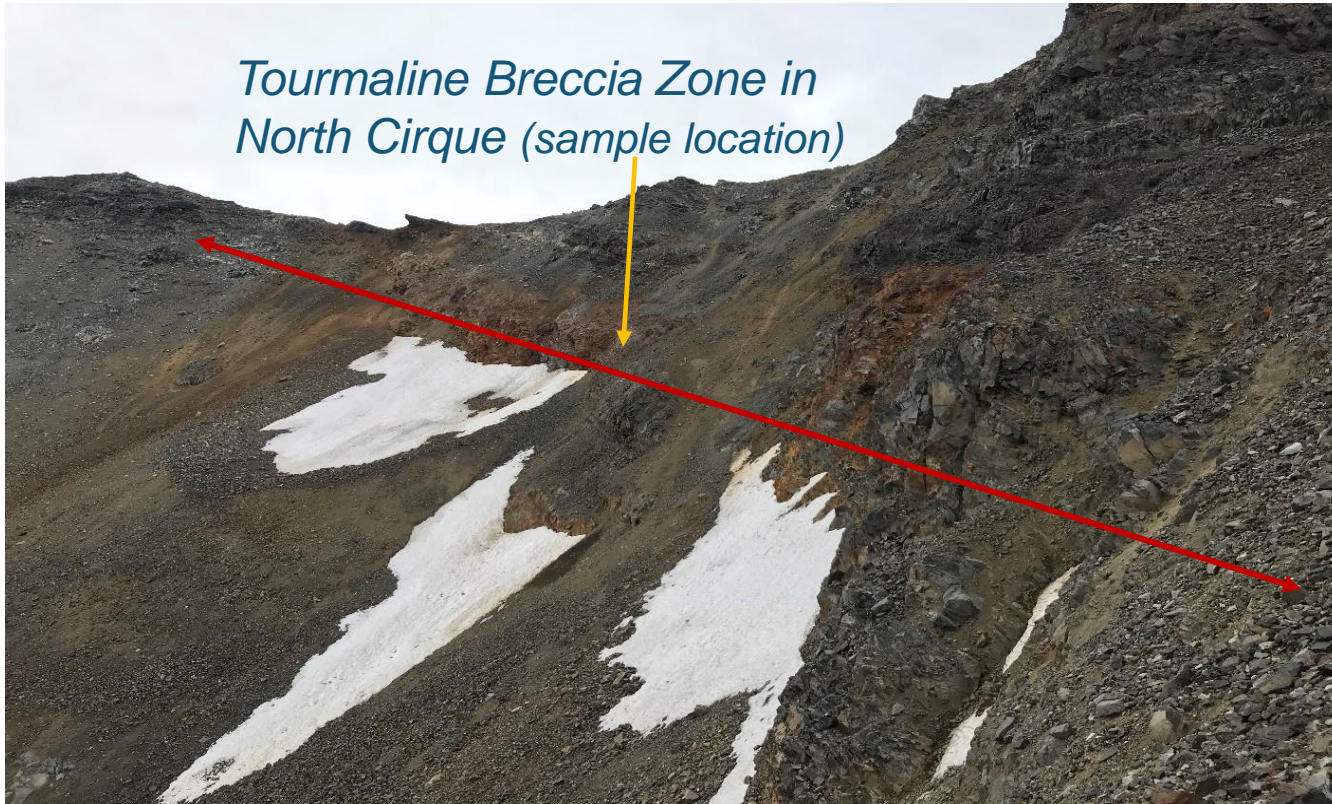
Tourmaline Breccia



North Cirque Tourmaline Breccia Zone

- Multiple high grade (up to 33 g/t Au and 8% Cu) Au, Cu, Co samples in North Cirque tourmaline breccia zone
- Cobalt grades from 4 grab samples in the gold-bearing tourmaline breccia zone in North Cirque up to 0.10% to 0.36%

Tourmaline Breccia Zone in North Cirque (sample location)

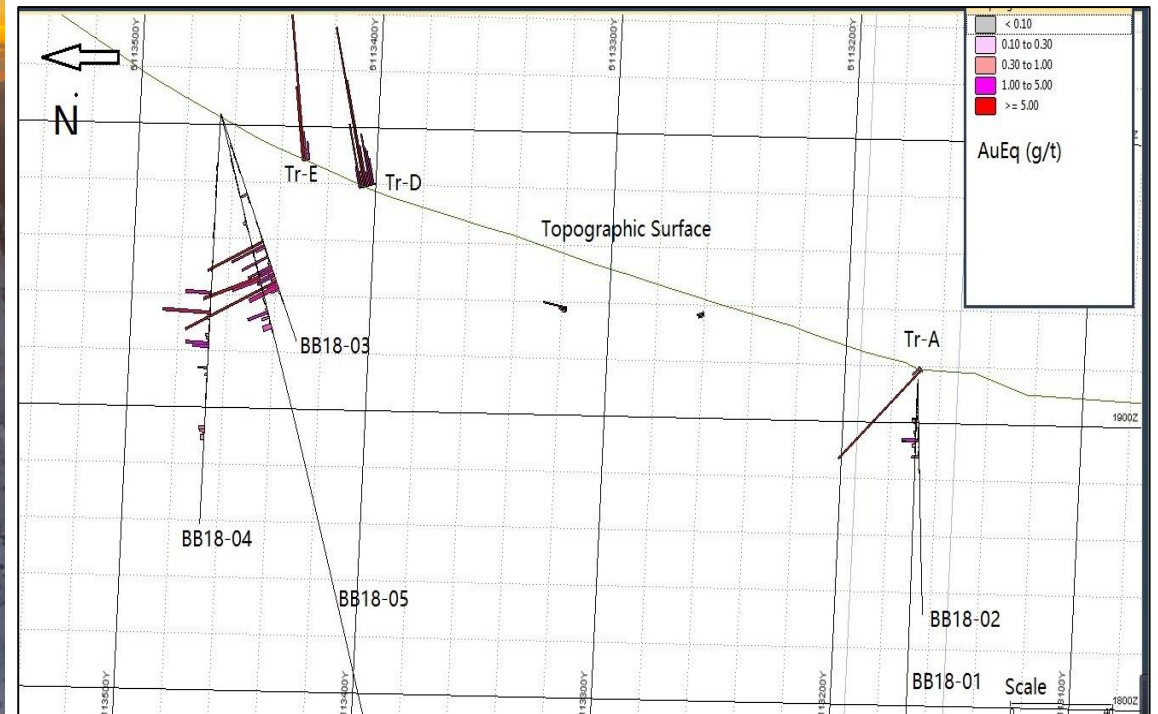


Massive sulphide (chalcopyrite) mineralization in tourmaline breccia zone (above)

2018 Drill Program – Backbone



- 5 holes, total of 1057 m diamond drilling, assay results from samples returned up to 8.2 g/t AuEq with 6.6 g/t Au, 0.1% Co & 0.04% Bi
- BB18-03-05 confirms 20-26 m tourmaline breccia intercept width with 100 m dip extension from surface with gold equivalent grade from 0.53 to 1.44 g/t at a down hole depth of 64-90 m
- 300 m strike extension, with 1-3 m thick high grade band near the hanging wall of the thrust fault with gold equivalent grade from 2.14 g/t to 5.0 g/t at a down hole depth of 64-67 m



Minerals in Quartz Tourmaline Breccia Mineralization Zone



Tourmaline breccia with arsenopyrite at grade of 6.60 g/t Au and 0.10% Co



Massive pyrrhotite at grade of 4.34 g/t Au, 0.22% Cu, 0.02% Co and 0.01% Bi



Quartz tourmaline breccia with pyrite at grade of 2.43 g/t Au, 0.06% Cu, 0.025% Co and 0.018% Bi

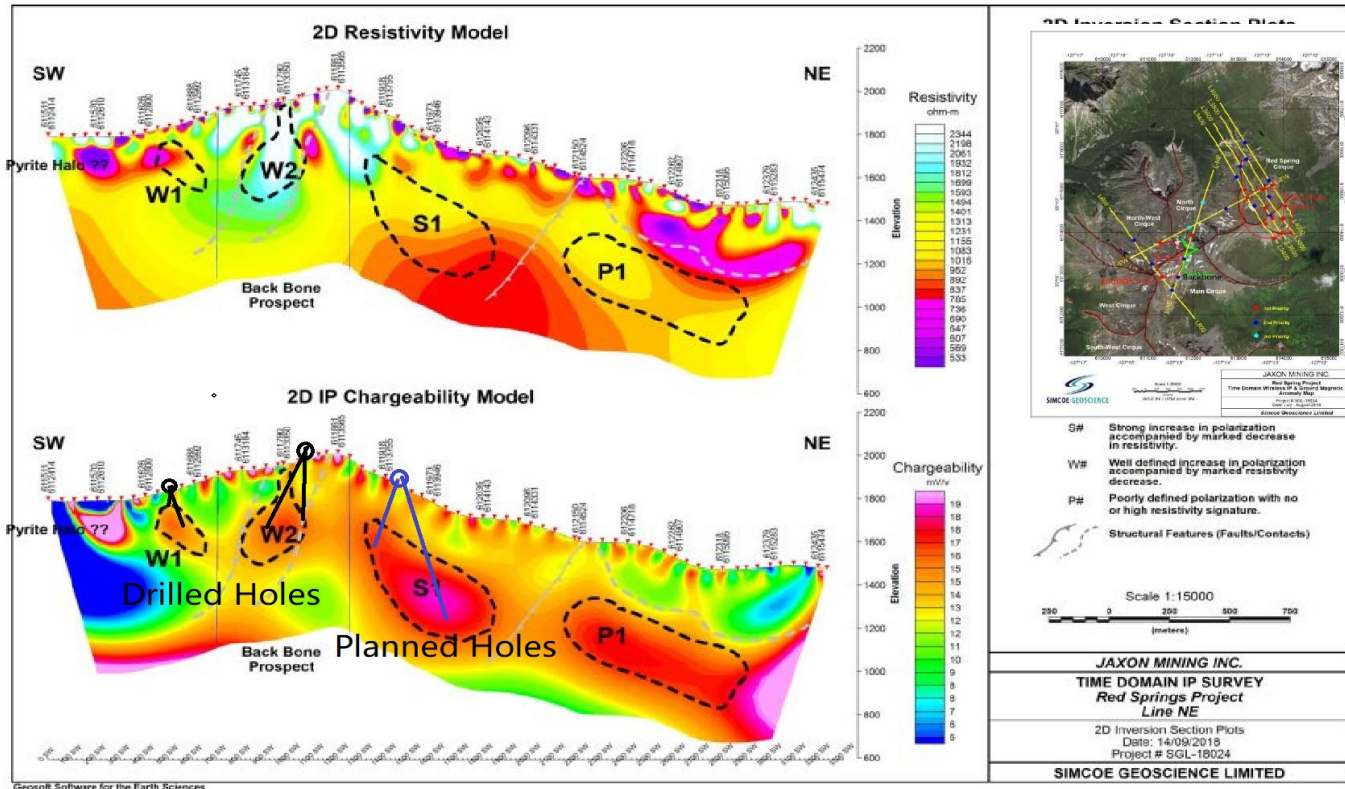


Tourmaline breccia with chalcopyrite at grade of 1.94 g/t Au, 0.13% Cu and 0.014% Co

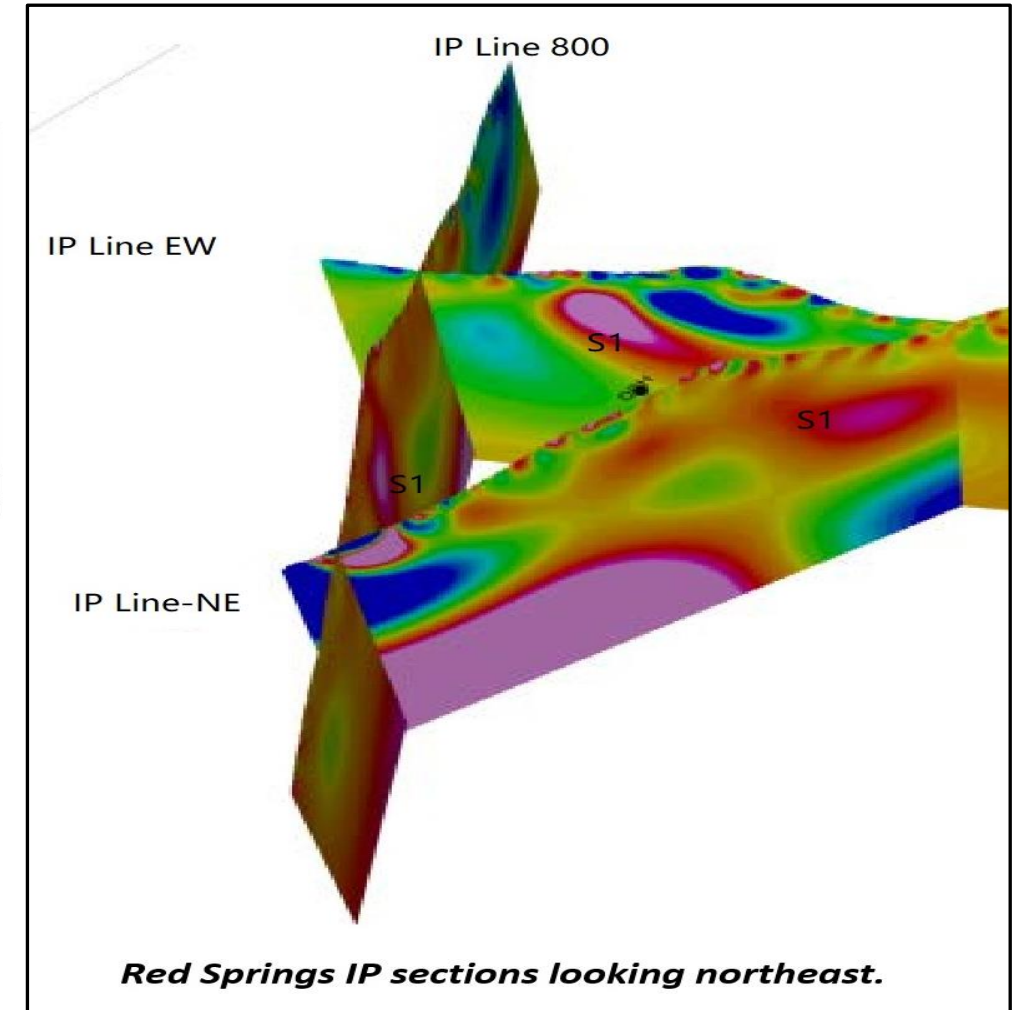
23 km Lines IP, Magnetic Survey & 2019 Drill Targets

Red Springs Project	Line #	Easting/Northing	Anomaly ID	Anomaly #	Priority	IP Chargeability (Strong/Mod/Weak)	DC Resistivity (High/Mod/Low)	Depth to Core
Main, Back Bone & North Cirques	NE	611662/6112913	W	W1	2 nd	Mod	Mod	175m
		611795/6113355	W	W2	2 nd	Mod/Strong	High	300m
		611971/6113937	S	S1	1 st	Strong	Mod	375m
		612210/6114728	P	P1	3 rd	Mod	Mod	450m

3 priority (S1) drill targets for tourmaline breccia zone in 2019



Line NE interpreted resistivity and chargeability sections, and inset map showing location of the line on Bing Imagery.

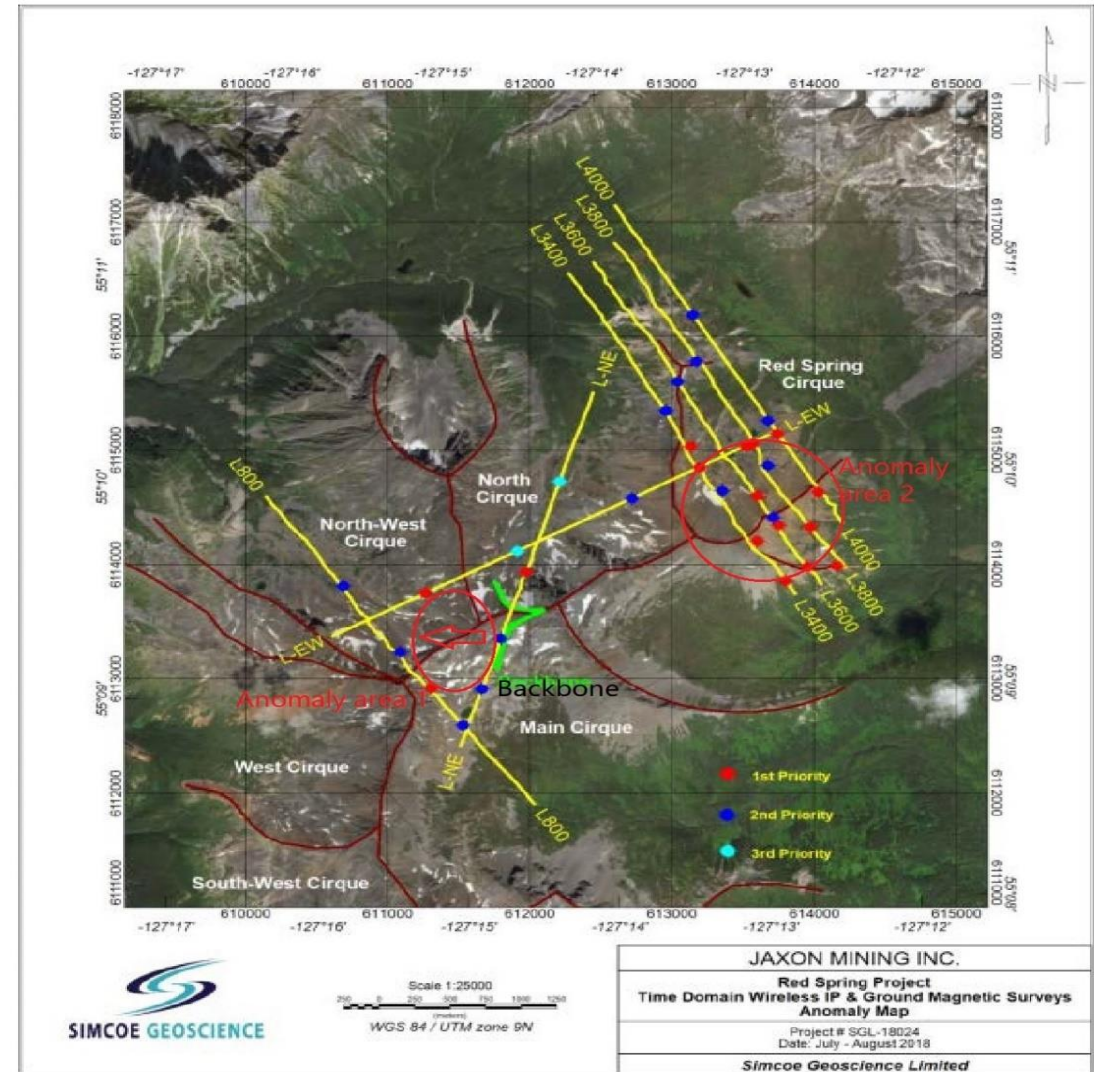


Red Springs IP sections looking northeast.

Drilled & planned drill holes at Backbone tourmaline breccia zone

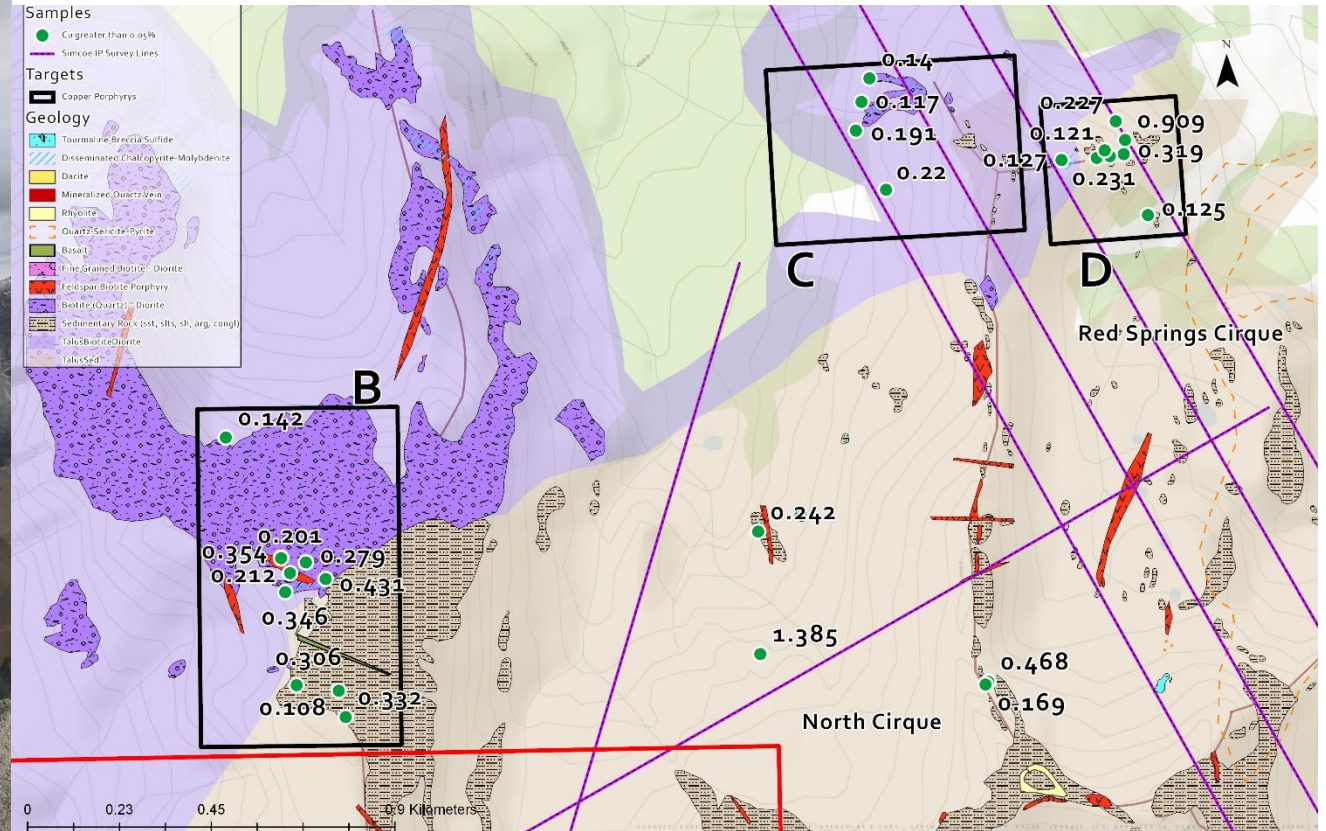
2019 Planned Works on Tourmaline Breccia Zones

- Detailed surface geological mapping focused on structures & alterations
- 12 km +/- (4 lines +/-) IP survey in the centre of tourmaline breccia zone area
- 5 to 10 (2000 m +/-) diamond drill holes to test the IP anomalies in:
 - N Cirque and NW Cirque
 - Backbone tourmaline breccia zone on dip & strike extension



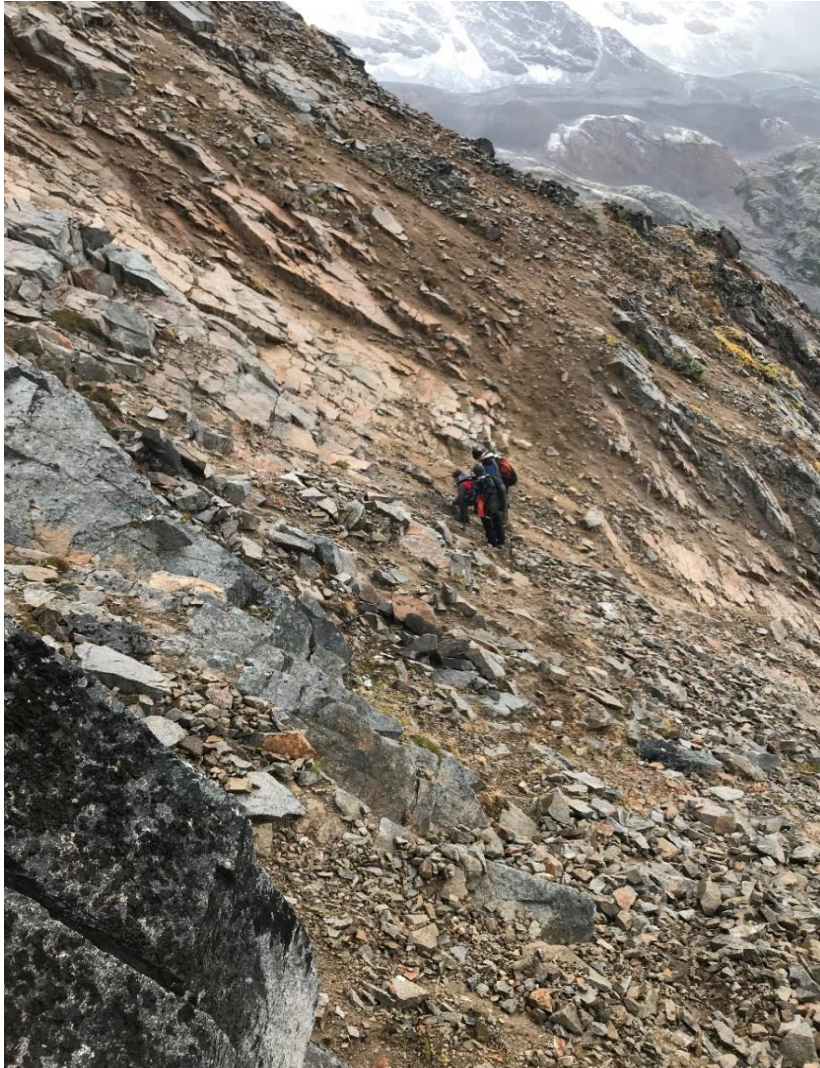
Three Porphyry Prospects – Primary Ridge Porphyry

Large argillic and phyllic alteration at Primary Ridge target



Strong copper anomalies from rocks samples (0.05-1.12% Cu)

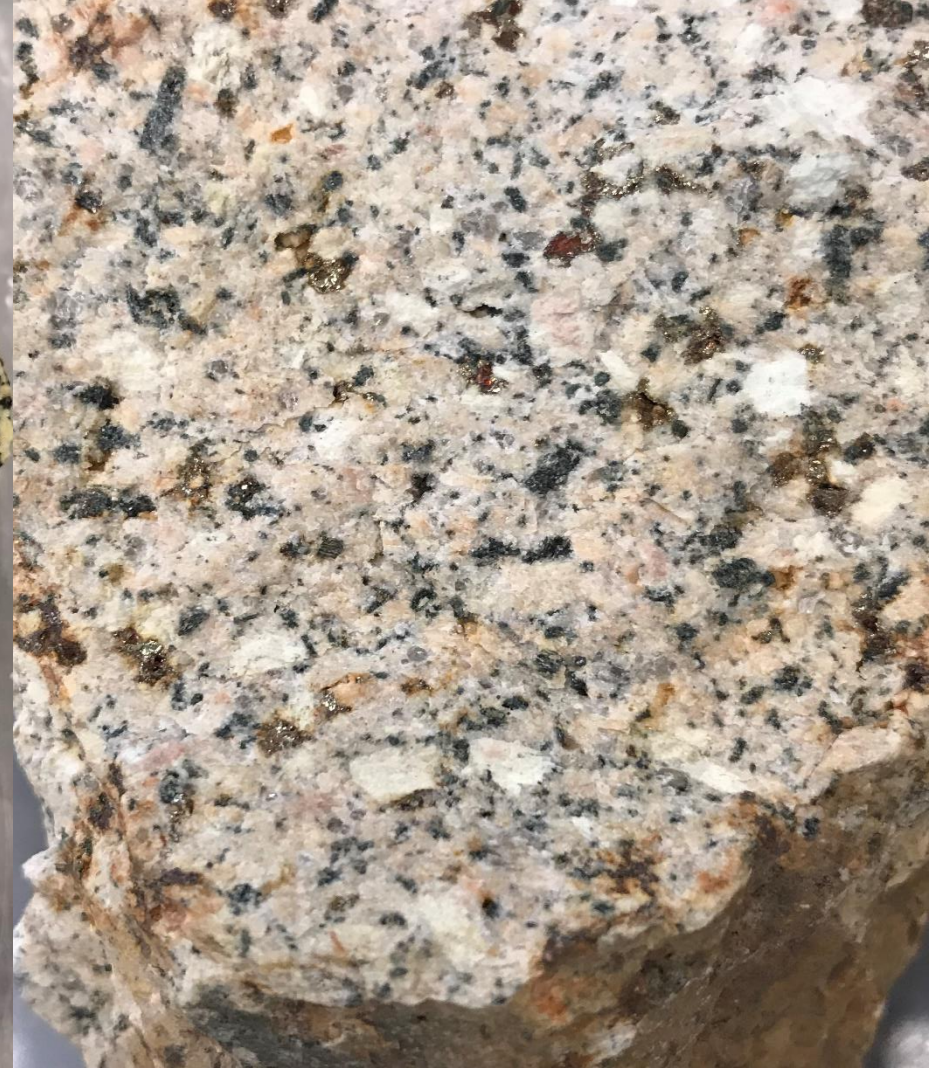
Primary Ridge Porphyry Target



Diorite porphyry intrusion



Chalcopyrite, potassium alteration veins & malachite alteration in biotite diorite

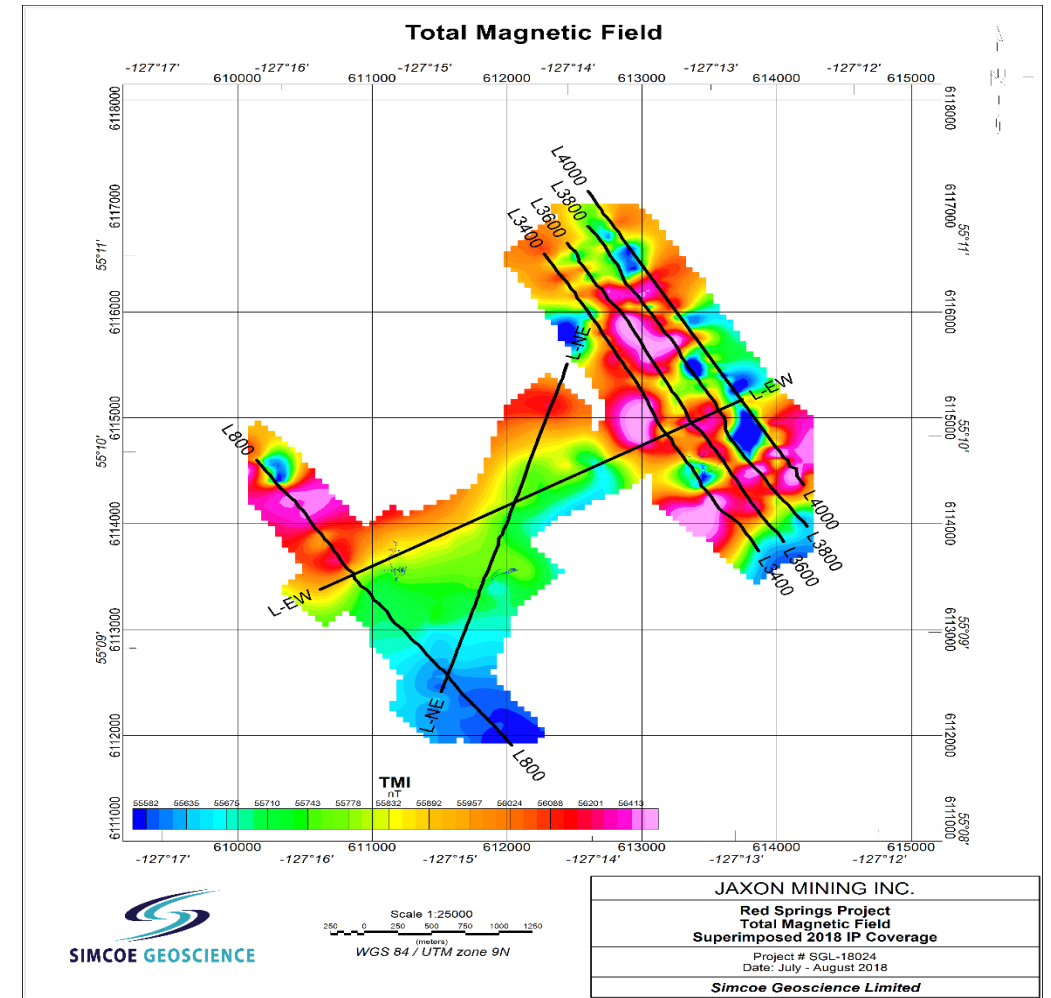
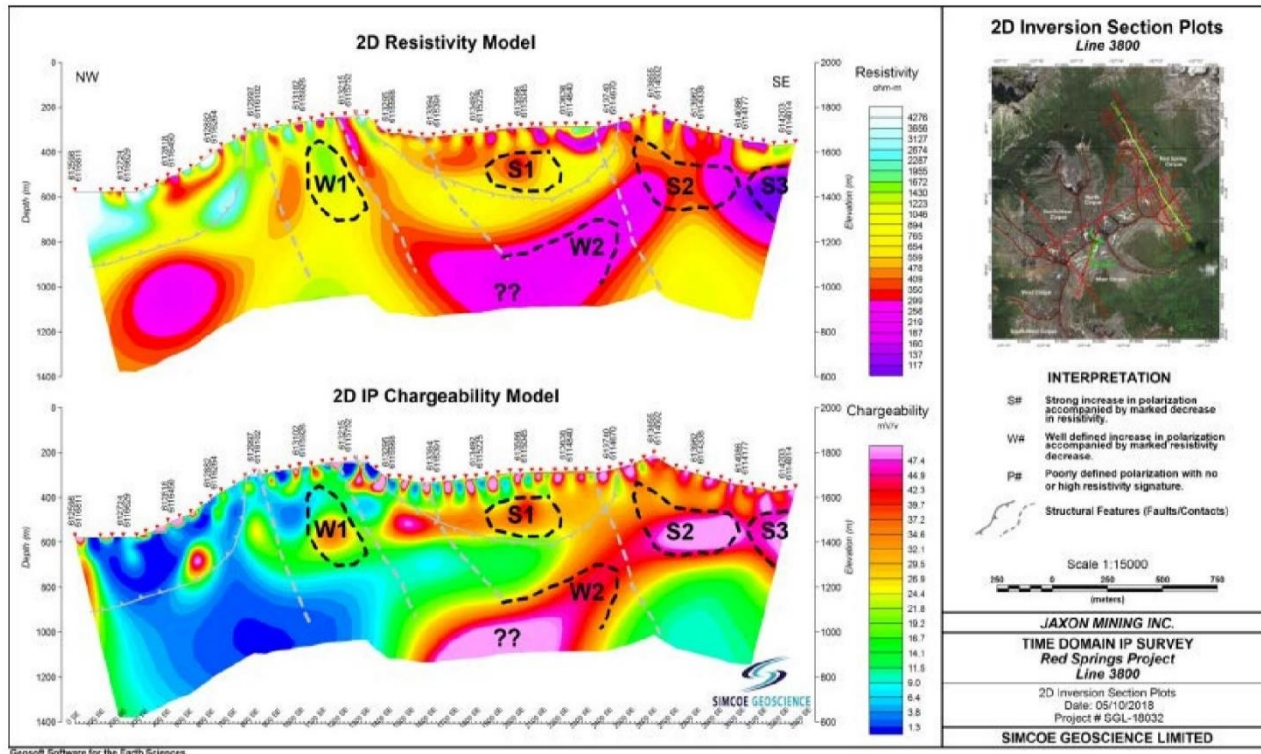


Whole rock potassium, pyrite alterations in granite

IP & Magnetic Survey for Porphyry Targets at Red Springs

Large IP anomaly area with porphyry signatures

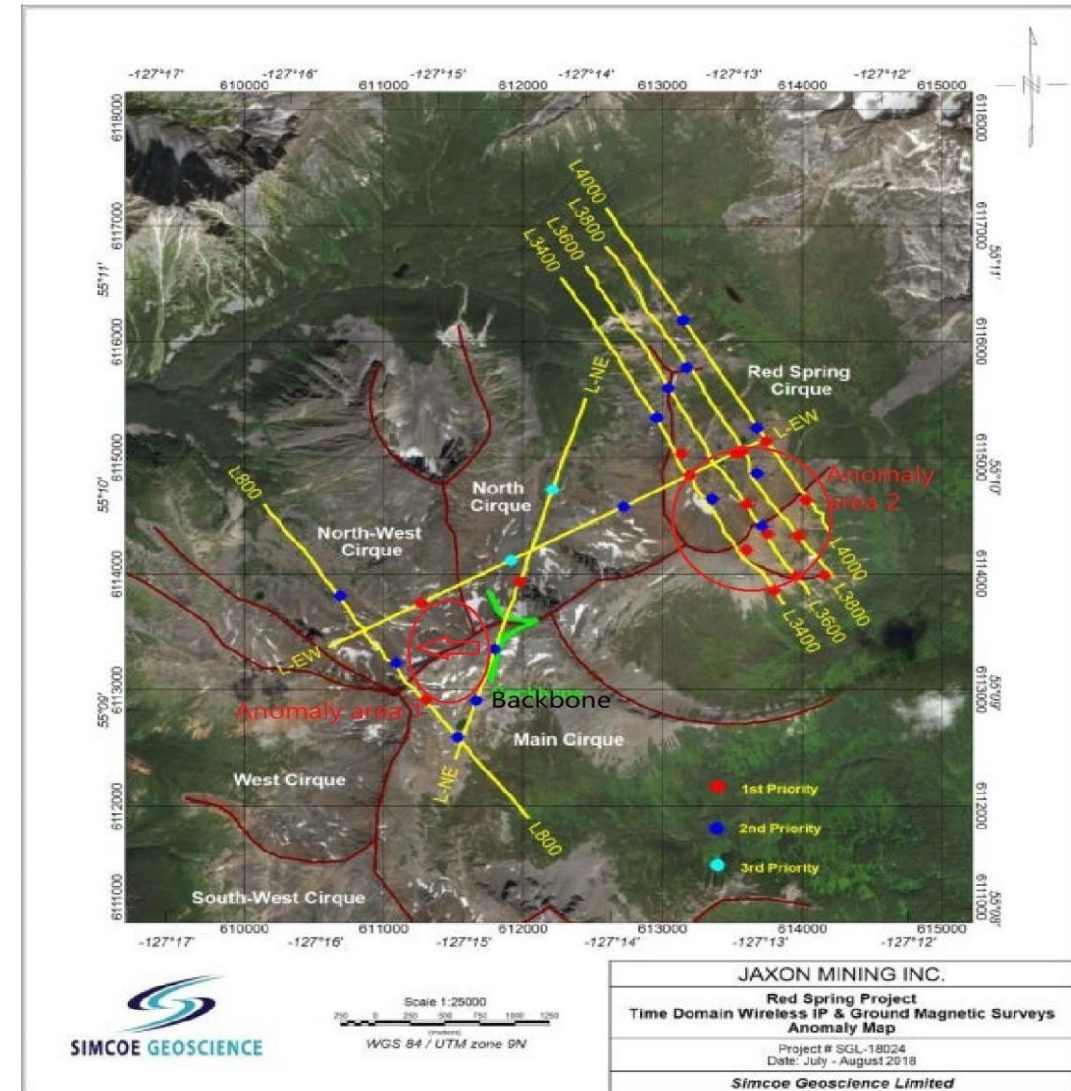
Red Springs Project	Line #	Easting/Northing	Anomaly ID	Anomaly #	Priority	IP Chargeability (Strong/Mod/Weak)	DC Resistivity (High/Mod/Low)	Depth to Core
Red Spring Cirque	3800	613170/6115779	W	W1	2 nd	Mod/Weak	High	320m
		613568/6115061	S	S1	1 st	Mod/Strong	Mod/Low	200m
		613675/6114868	W	W2	2 nd	Strong	Low	540m
		613973/6114330	S	S2	1 st	Strong	Low	250m
		614161/6113991	S	S3	1 st	Strong	Low	260m



Strong IP chargeability anomalies coincide with strong magnetic anomalies

2019 Planned Works on Red Springs Porphyry Targets

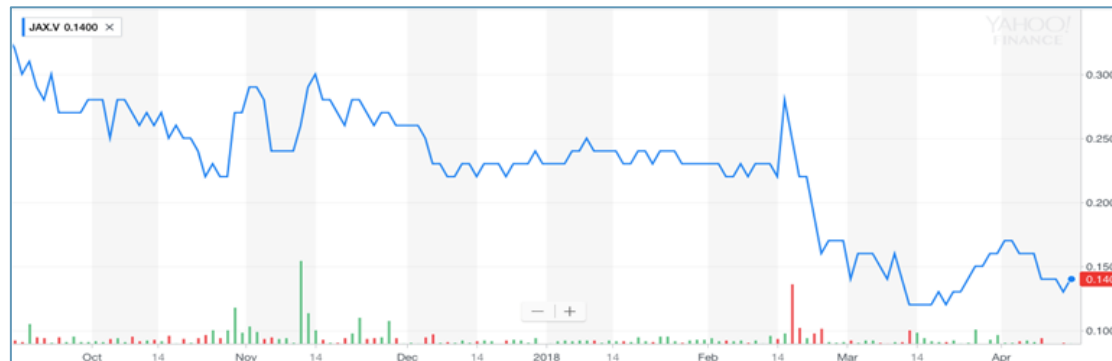
- Detailed surface geological mapping focused on structures & alterations
- 20 x 50 m grid soil sampling program at Primary Ridge target area
- 3 to 5 (1000 m +/-) diamond drill holes to test IP & soil geochemistry anomalies
- Seeking drilling partner



- JOHN KING BURNS – Chairman, President & CEO
- TONY GUO, P.Geo. – COO & Director
- JAMES LAVIGNE, P.Geo. – Director & Technical Advisor
- LAURENCE STEPHENSON, P.Geo. – Director & Technical Advisor
- ALAIN VOISIN, CPA, CGA – CFO
- BRUCE BALLANTYNE, Project Manager

Share Structure & Stock Info

Shares Issued	92,070,684
Warrants	17,808,722
Options	400,000
Fully Diluted	110,279,406
Last (Feb 25, 2019)	\$0.09
52 week high/low	\$0.21 / \$0.045
Institutional Support – Strategic Investor	Zijin Global Asset Management Fund





Contact

Suite 1105 - 750 West Pender Street
Vancouver, British Columbia, Canada V6C 2T8

Tony Guo

(778) 877-5480

 tguo@jaxonmining.com

John King Burns

(604) 398-5394

 jkb@jaxonmining.com